



CAMERON PLACE

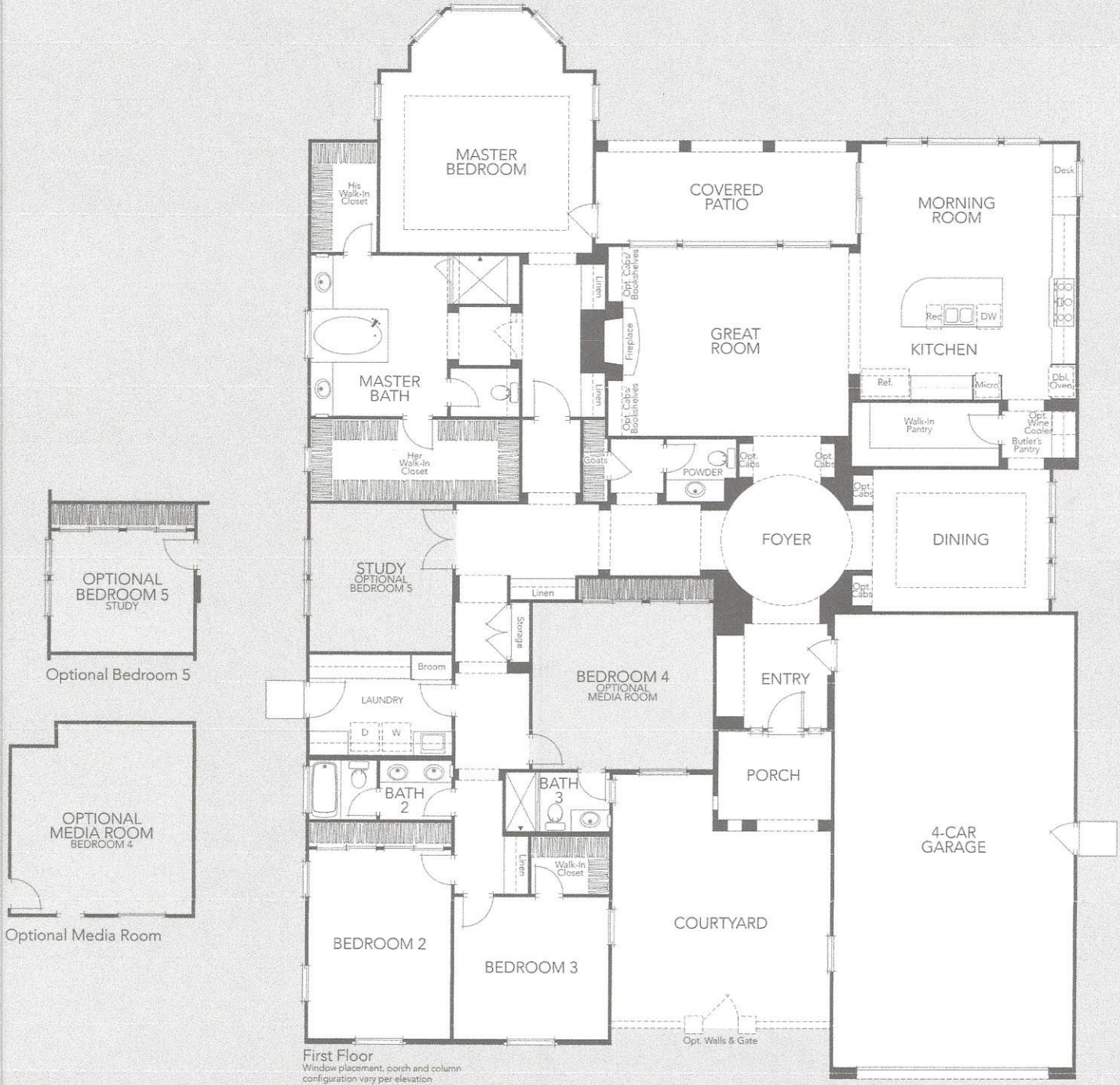
RESIDENCE 2

Approximately 3,679 Sq. Ft.

Optional Media Room

4 Bedrooms, 3.5 Baths

Optional Bedroom 5



First Floor
Window placement, porch and column configuration vary per elevation

2157 CAMERON CIRCLE, PLEASANTON, CA 94588

CAMERONPLACEPLEASANTON.COM | PONDEROSAHOMES.COM

PONDEROSA
HOMES

Ponderosa Homes reserves the right at its sole discretion to make changes or modifications to prices, floor plans, features, specifications, exterior color schemes, policies, guidelines, dates, literature, maps, materials, homesites released and plans designated on each homesite without notice or obligation. Special wall and window treatments, custom paint colors, upgraded floor coverings, landscaping, custom-designed walks and patio treatments and many other items featured in and around the model homes are decorator suggested and are not included in the purchase price. All square footages and dimensions are approximate. Garage spaces may not accommodate all makes of vehicles. Not all options are available on every plan or with every phase due to preplotting by Ponderosa Homes for construction timing. All sales are made on a first-come, first-served basis or as determined by lottery priority. Homes and product types are subject to availability. Ponderosa Homes also reserves the right to disregard, suspend or delay any sales release, the taking of reservations and the writing of offers. Prices may increase or decrease at any time and without notice. Ponderosa Homes is a licensed California real estate broker. license #01257567. REALTOR®.